

Europress Tooling Care Guide





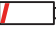















Thank you for choosing to invest in the high quality, German manufactured Europress pressing tools. These tools house unparalleled technology which upholds the integrity of the Europress system and give you peace of mind on your installations. There is no substitute for quality.

Firstly, the following is only intended as a guide to help you maximise the life of your investment. All repairs and servicing should be carried out by an approved service agent.

Care for the pressing tool

1. It is recommended the Europress tools are serviced by an approved service agent at least every two years or 10,000 presses. The tools have an inbuilt alert system to advise when a service is due. Alternatively, Waterworks has software to download an operation log from the tooling which can be used to determine service intervals. If tooling is being used regularly it would be a good idea to do an annual service.
2. The tooling has inbuilt warning signals and alarms. If you notice a light flashing or an alarm sounding refer to the below guide:

 Red LED	 White LED Torch	 Audible Alarm	When	Why
 20 Sec				 Battery low, recharge before anymore presses
 2 x			After inserting battery	Self check, OK to use

 20 Sec / 2 Hz			After working cycle	 Return tool to authorised service centre
 20 Sec / 5 Hz			While exceeding the temp. limit	Unit too hot, allow to cool before further use
 20 Sec  20 Sec / 2 Hz			After working cycle	  Battery is low and tool requires service
 1 x			After working cycle	Error: Joint is not correctly pressed <ul style="list-style-type: none"> Required pressure has not been achieved The operator has interrupted the pressing cycle manually while motor was running
 3 x	 3 x		After working cycle	Serious Error: <ul style="list-style-type: none"> The pressure has not been reached while the motor was running

3. Europress tooling uses standard Makita batteries. We recommend using a battery until it is low, a signal will tell you this, before charging. Depending on the size tool, the charge cycle is expected to be 20-30mins.
4. At the end of each day or prior to putting the tooling back in storage, we suggest giving the pressing tool a quick visual inspection for any damage or stress marks. Wipe the tooling down with a rag to remove any dirt or grit which may have found its way onto the tooling.
5. When attaching a pressing jaw onto the tool, ensure the spring-loaded pin is properly inserted and locked in place. Failure to do this could result in the pin breaking creating a costly repair or a replacement tool.
6. When operating tooling at heights ensure appropriate drop protection is in place to avoid the tool being damaged.

Care for the pressing jaws/chains

7. At the end of each day or prior to putting the tooling back in storage, we suggest giving each pressing jaw and/or pressing chain a thorough visual inspection for wear and damage. Key signs to look for are as follows:

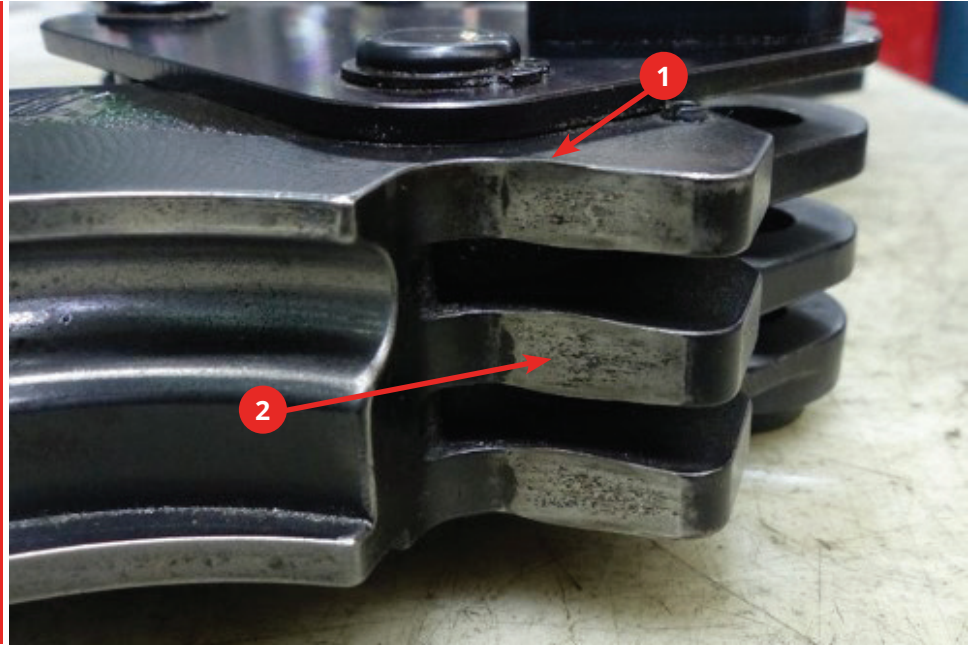
Wear on the outer sliding surfaces.



The ribs are getting wider when they are worn.

1. It shouldn't be wider than shown on this picture. The bulging on the sides can be filed off.

2. If there are cracks on the surfaces then the part has to be changed. No rework possible.



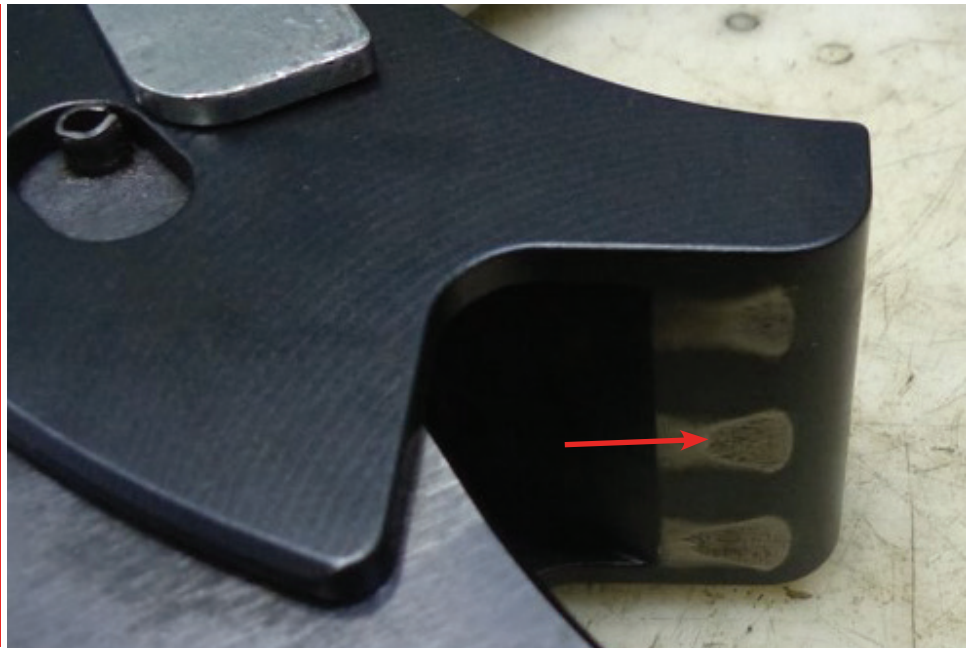
This is an example where the ribs became too wide. This part has to be changed.



Wear on the inner sliding surfaces.



This part has to be changed if the inner surface looks like this and if you can feel grooves with your finger.



Check the bore of the connecting link.

You have to exchange the connecting links if this bore is oval. Measure the hole crosswise - if the difference is more than 0,3mm it is not good anymore.



Check the profile for deformations, rust, dirt, and other damages. Deformations like this can be reworked with an air grinder or something similar. Be sure that you take off as less material as possible.





If the profile is rusty and dirty it must be cleaned and polished. It is supposed to look like the second picture above.

Check the pins for deformations.



8. Clean all pressing jaws and chains thoroughly using a degreaser.
9. Ensure all locking pins are properly locked prior to pressing a jaw. Failure to do this could result in a pin breaking making the tool inoperable.



**WATER
WORKS**

Smarter pipeline solutions

**Talk to our team now about your
piping projects 0800 387 677**

e: info@waterworks.co.nz w: www.waterworks.co.nz